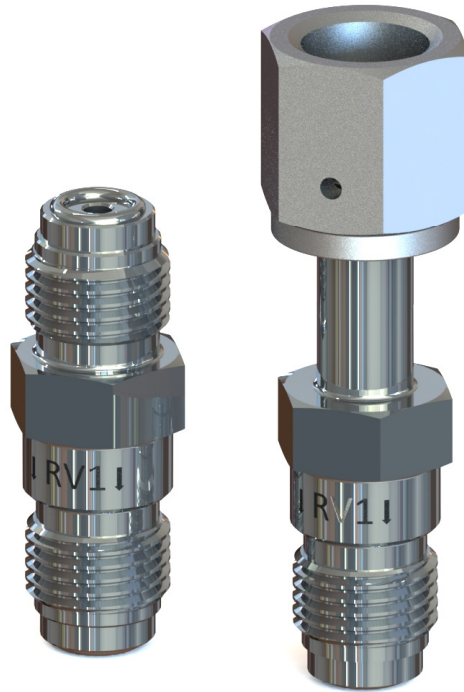


RV1 Relief Valves

Compact Pressure Relief Valves



GTC Features

- Compact Size
- Factory Adjusted Pressure Setpoints

Technical Data

Specification	Value
Cracking Pressure	50, 75, 100, 125, and 150 PSIG (factory set)
Operating Pressure	Vacuum to 3,300 PSIG
Proof / Burst Pressure	150% / 300% of operating pressures
Flow Coefficient Cv	0.15 (at full open)
Operating Temperature	-10° to 300° F
Wetted Materials	Body and Poppet: 316L SS, Spring: Music Wire
Wetted Material - Seal*	Viton™ (Kalrez™ optional)

* standard seal includes light coating of Krytox 206 for sealing improvement.



Ordering Information

RV1-MM-100-KZ

Body Series

RV1 - Standard

Connections

F - 1/4" Female Face Seal

M - 1/4" Fixed Male Face Seal

Inlet

Outlet

Options

KZ - Kalrez™ Seal

Pressure Setpoint

50 psig

75 psig

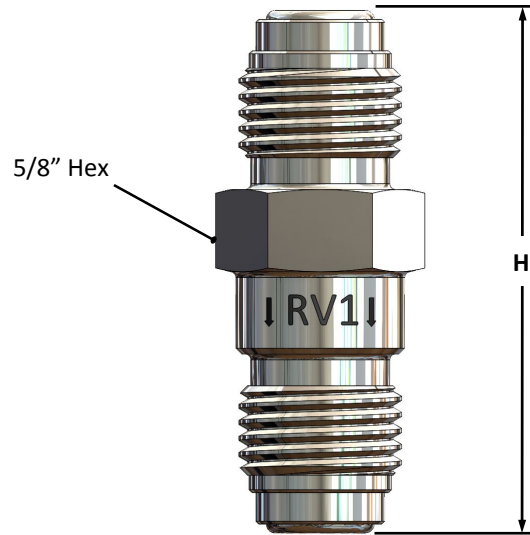
100 psig

125 psig

150 psig

Dimensions

Relief Valve	Overall Height (H)
RV1-MM	1.81" [46 mm]
RV1-FM	2.12" [54 mm]



(RV1-MM Shown)



GTC PRODUCTS

www.gtc-products.com