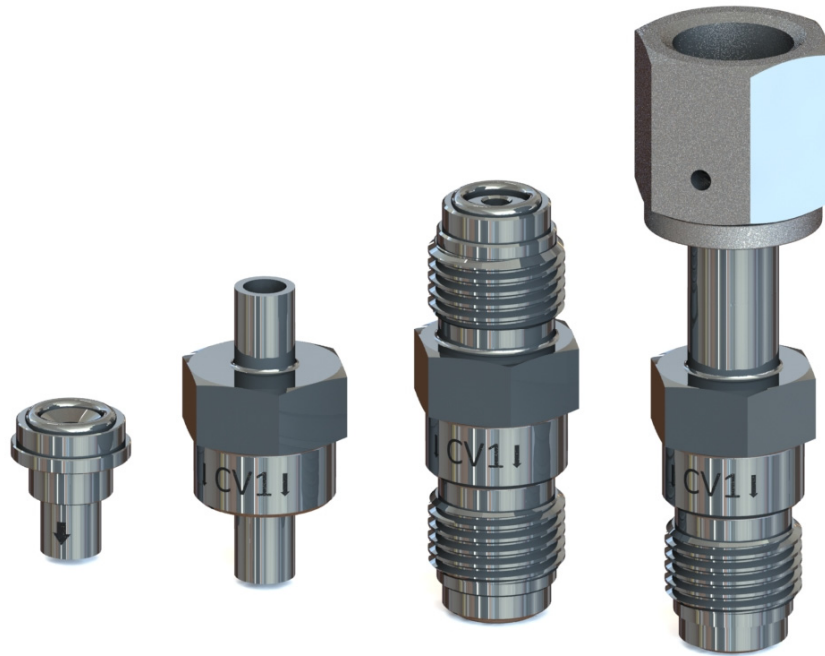


# CV1 Check Valves

*Compact Size*



## GTC Features

- Compact Size
- Poppet Style Design
- Economical

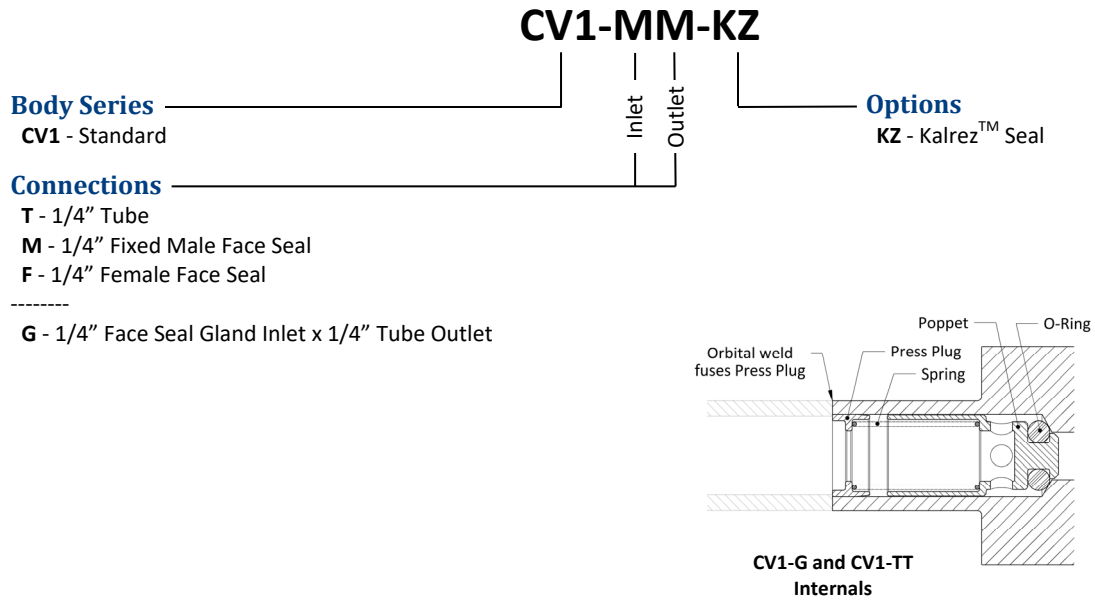
## Technical Data

Specification	Value
Cracking Pressure	3 PSID Nominal (Note: up to 2 psi back pressure is required to reseal)
Operating Pressure	Vacuum to 3,300 PSIG
Proof / Burst Pressure	150% / 300% of operating pressures
Flow Coefficient Cv	0.15 (at full open)
Operating Temperature	-10° to 400° F (-23° to 204° C)
Material - Body	Electropolished 316L VAR SS (internal wetted @ 10 Ra average)
Material - Seal*	Cleanroom Grade Viton™ (Kalrez™ optional)

\* standard seal includes light coating of Krytox 206 for sealing improvement.

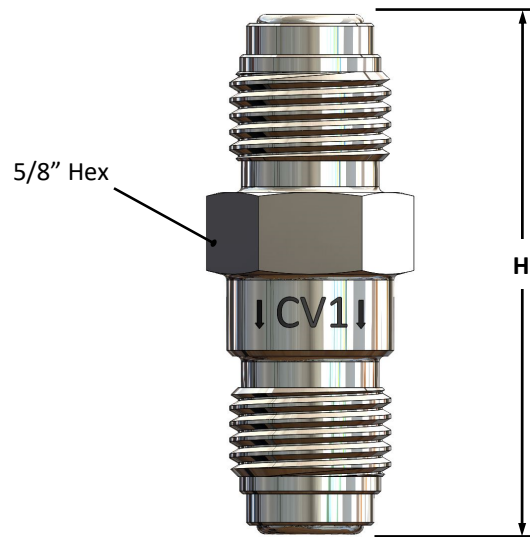


# Ordering Information



# Dimensions

Check Valve	Overall Height (H)
CV1-G	0.60" [15.2 mm]
CV1-TT	1.25" [31.7 mm]
CV1-MM	1.81" [46.0 mm]
CV1-FM	2.12" [53.8 mm]



(CV1-MM Shown)